

Welcome!

Think of a team you were part of that felt productive - what made it effective?

(Drop answer in the chat)

Building Collective Effort for Student Success Systems: Student Success Teams in Action

GRAD Partnership Community of Practice

December 13, 2023

THE GRAD
PARTNERSHIP

Advancing Student
Success Systems

GRADPARTNERSHIP.ORG



Our Mission

Partnering with communities to use **high-quality student success systems** so that schools are empowered to graduate all students ready for the future.

THE GRAD
PARTNERSHIP

Advancing Student
Success Systems

[GRADPARTNERSHIP.ORG](https://gradpartnership.org)

GRAD Partnership Organizing Members



GRAD Partnership CoP Objectives

- Increase awareness of and plan action for building effective student success systems
- Build community across schools and districts who are interested in enhancing their student success systems

Facilitation Team



**Sarah
Howard**

Network for College Success

*Director of Professional
Learning*



**Krys
Payne**

Network for College Success

Executive Director

GRAD Partnership Community Members

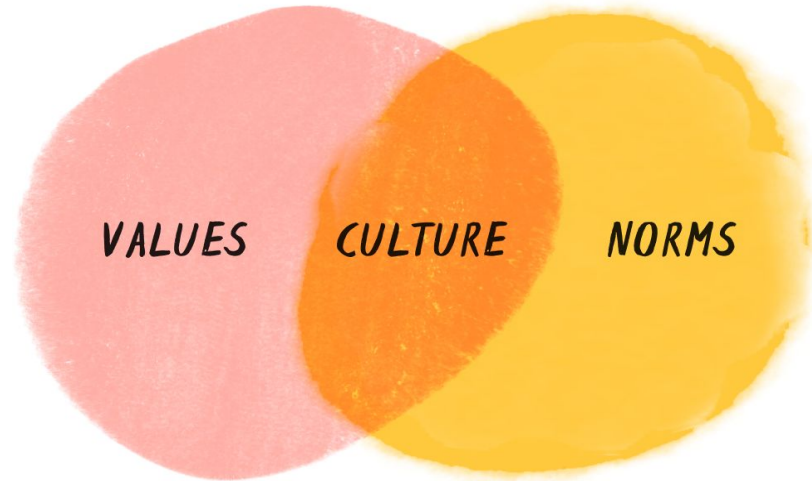
Welcome!

In the chat, please share your name, organization, and location.



Community Agreements

- **We, not me:** Share stories and air time
- **Accept non-closure**
- Chatham house rule: **Use the ideas, keep details in the community**
- **Share to learn**
- **Make room for joy**



Values are the beliefs, philosophies, and principles that drive a group.



Norms are the ground rules that dictate how people interact.



Culture is the interaction between the two; the beliefs and the behaviors of the group.

STUDENT SUCCESS TEAM REFLECTION AND ACTION PLANNING TOOL

Objectives for this Community of Practice

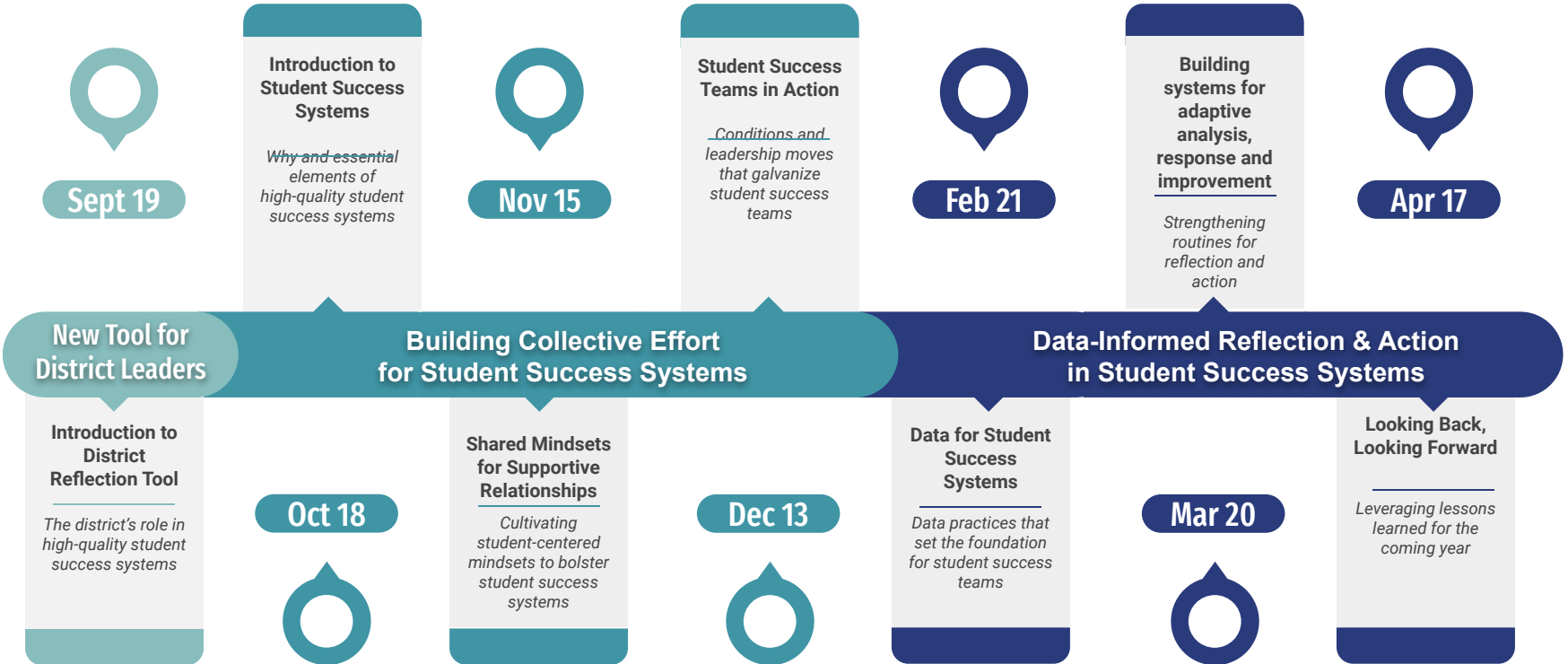
- Build community across schools and districts who are interested in enhancing their student success system
- Increase awareness of and plan action for building effective student success systems



Community Agreements

- We, not me: Share stories and air time
- Accept non-closure
- Chatham House rule: Use the ideas, keep details in the community
- Share to learn
- Make room for joy

Community of Practice Learning Arc 2023 - 2024



Student Success Teams in Action

THE GRAD
PARTNERSHIP

Advancing Student
Success Systems

[GRADPARTNERSHIP.ORG](https://gradpartnership.org)

STUDENT SUCCESS TEAMS



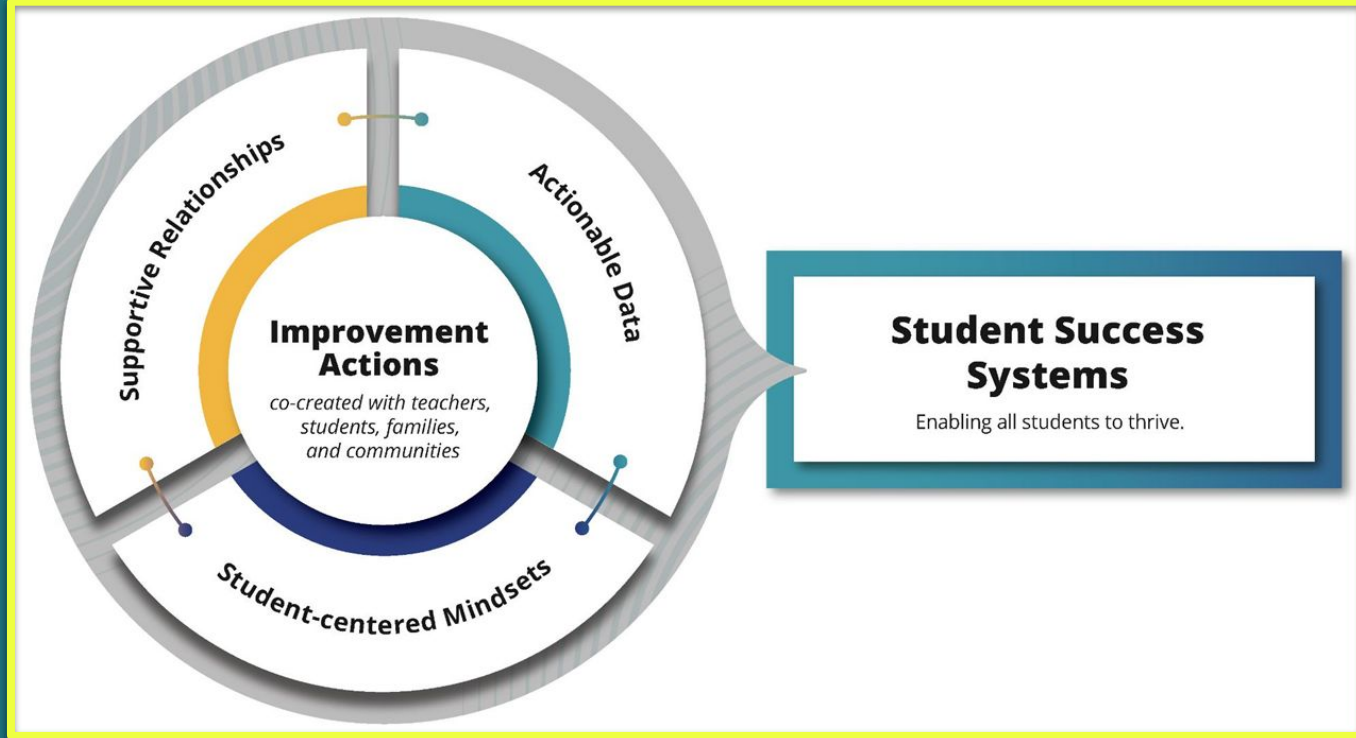
Student success teams are a group of adults who work together on a regular basis to implement and continually improve a student success system.

Key Considerations:

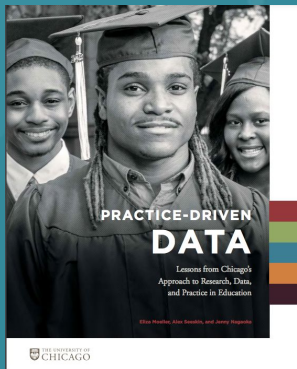
Evidence and experience suggest that to be highly effective, student success teams need:

- Regularly scheduled time to work together during the school-day
- Easy access to student-, classroom-, and grade-level attendance, course performance, and well-being data
- Clearly defined and distributed roles and responsibilities
- Ability to take action and advocate for changes to school practice and policy
- Shared set of norms

Enabling Conditions



A great deal of trust-building needs to occur within a team and across a school in order to make the conditions safe for teachers to use data to collaborate and improve. Though some tools can help—norms, protocols, and listening techniques, to name a few—there is no standardized approach to developing trust. The work of trust-building is deeply contextual and personal. It is not built in an off-site professional learning session, but rather can only be developed by engaging in difficult data-driven conversations, and then reflecting on that process. It starts at the top of a school building. Fundamentally, principals and administrators must set the conditions for individuals and teams to trust each other in order to keep a lens of improvement and support, rather than shame and judgment.



THE GRAD
PARTNERSHIP

GRADPARTNERSHIP.ORG

Advancing Student
Success Systems

"Practice-Driven Data: Lessons from Chicago's Approach to Research, Data, and Practice in Education",

Quality Relationships Continuum

WEAK
(low trust)

STRONG
(high trust)



Contentious

Disengaged/
Apathetic

Cooperative

Co-generative/
Collaborative

Pair Share

What is the level of trust in the adult culture at your school? How do you know?

Poll Question

Based on your discussion, what is the level of trust in the adult culture at your school?

Fireside Chat



**Brad
Rossi**
*Principal
Wells Community
Academy*




**Conrad
Timbers- Ausar**
*Principal
Englewood STEM
High School*



**Dawn
Ramos**
*Principal
Tilden Career
Community
Academy*

Trio Discussion

What ideas are coming up for you about moves you can make to foster trust within student success teams?



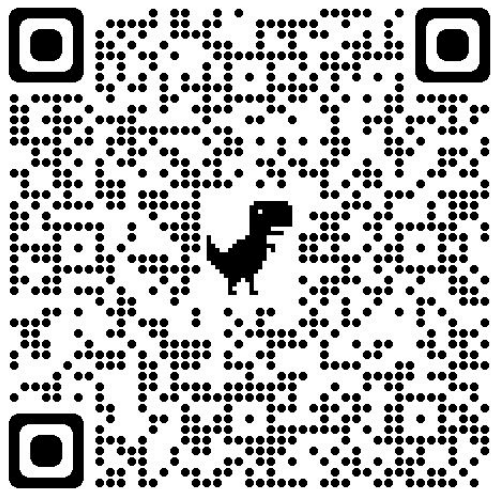
Q & A

Share in the chat...



What is a main takeaway from today or possible next step you are considering?

Share Your Feedback!



<https://bit.ly/GPCoP23-24>



Grad Partnership Community of Practice

Thank you for being part of our community - and for offering honest feedback and input to help us shape our future meetings.

Looking forward...

Register for Feb 21 CoP -
New Series - Data-Informed Reflection
& Action in Student Success Systems

Session 1 -
Data for Student Success Systems

Subscribe to our newsletter for the
latest CoP details!



Thank you!

THE GRAD
PARTNERSHIP

Advancing Student
Success Systems

[GRADPARTNERSHIP.ORG](https://gradpartnership.org)

Fireside Chat Questions

Bella from Pa'lante Transformative Justice asks, "How can my organization create student success teams/ models without being in schools?"

Barb asks, "What if the person you want off the bus is the principal?
#barriertotrust"